



ASPLUNDICARPETS

ONLY THE FINEST TECHNIQUES AND MATERIALS

When we strive to create carpets that are stylish and durable enough to be passed on for generations, only the finest materials and techniques are good enough. Our carpets are woven, knotted or tufted by hand, by skilled craftsmen.

Handcrafting makes each carpet unique, like a piece of art. We use superior quality New Zealand wool as primary material. The wool is rich in natural fats that give the carpets a beautiful luster while also providing good protection against stains. In some designs we add fine materials like silk or tencel, for a characteristic look and feel.

Fleur
Hand knotted Platinum Rug

Tibetan Thin
Hand knotted Rug

Hand tufted
New Zealand wool and woolblends

Index

Our qualities _____	P. 5
Hand knotted platinum rugs _____	P. 9
Fluer-Hand knotted platinum rug _____	P. 11
Gems-Hand knotted Tibetan thin rugs _____	P. 13
Gems-Hand knotted Sumak _____	P. 15
Biblioteket Rug _____	P. 17
Hand tufted rugs _____	P. 19-21
Hand tufted round & square rugs _____	P. 23
Woolsilk rugs _____	P. 25
Hand tufted tencel carpet (Wedge) _____	P. 27
Gradient Series _____	P. 29
Horizon _____	P. 31
Mini Flag _____	P. 35
Point _____	P. 37
Stitch _____	P. 39
Star _____	P. 41
Rand 25 _____	P. 43
Carpet C _____	P. 45
Carpet Colour Guide _____	P. 48-50



OUR QUALITIES

HAND KNOTTED

The beauty and durability of a hand knotted rug is beyond compare. We offer hand knotted carpets in 5 different qualities:

INDO NEPAL, TIBETAN TIBETAN THIN, A-KNOT and SUMAK.

The rugs in our Platinum series, our most exclusive, are made of 75% wool and 25% silk. Platinum rugs made using the **INDO NEPAL** technique have the most dense knotting, about 122 000 knots per m2.

Platinum rugs made using the **TIBETAN** technique are made with larger knots and thicker threads of yarn creating a more vivid style. It also has a higher pile that are more roughly cut. **TIBETAN THIN** is a tight but slightly thinner handknotted carpet with a shorter pile. It's made from either 100% New Zealand wool with a cut out pattern or a pattern in a tencel-wool blend. The blend gives the carpet a beautiful lustre and shine.

The rugs in our **A-KNOT** series are made with medium-sized knots, in 100% wool. A-Knot rugs are similar to our tufted rugs in appearance, but they have less yarn and are more durable, especially for floors with heating systems. A-Knot is available in most of our carpet designs.

SUMAK is an ancient knotted technique which looks braided, the pattern is raised in a pile.

HAND TUFTED

Hand tufted rugs should not be confused with machine-made tufted rugs. Hand tufting is a traditional method, which requires a high level of craftsmanship. Our rugs are entirely made by hand: the yarn is hand dyed, tufted by hand with a small mechanical tool and finally sheared, using hand held scissors. No electricity is used. Our hand tufted rugs comes in two qualities: 100% New Zealand wool and WOOLSILK 50/50.

100% WOOL is our standard quality and has a pile height of 1,5 - 2 cm. The weight is approx. 3 - 3,5 kg/m2. The **WOOLSILK 50/50** is made of 50% wool and 50% tencel and has a pile height of 2 - 2,5 cm. The rugs weigh approx. 3,5 - 4 kg/m2. Woolsilk has a beautiful lustre thanks to the special wool mix.

HAND WOVEN

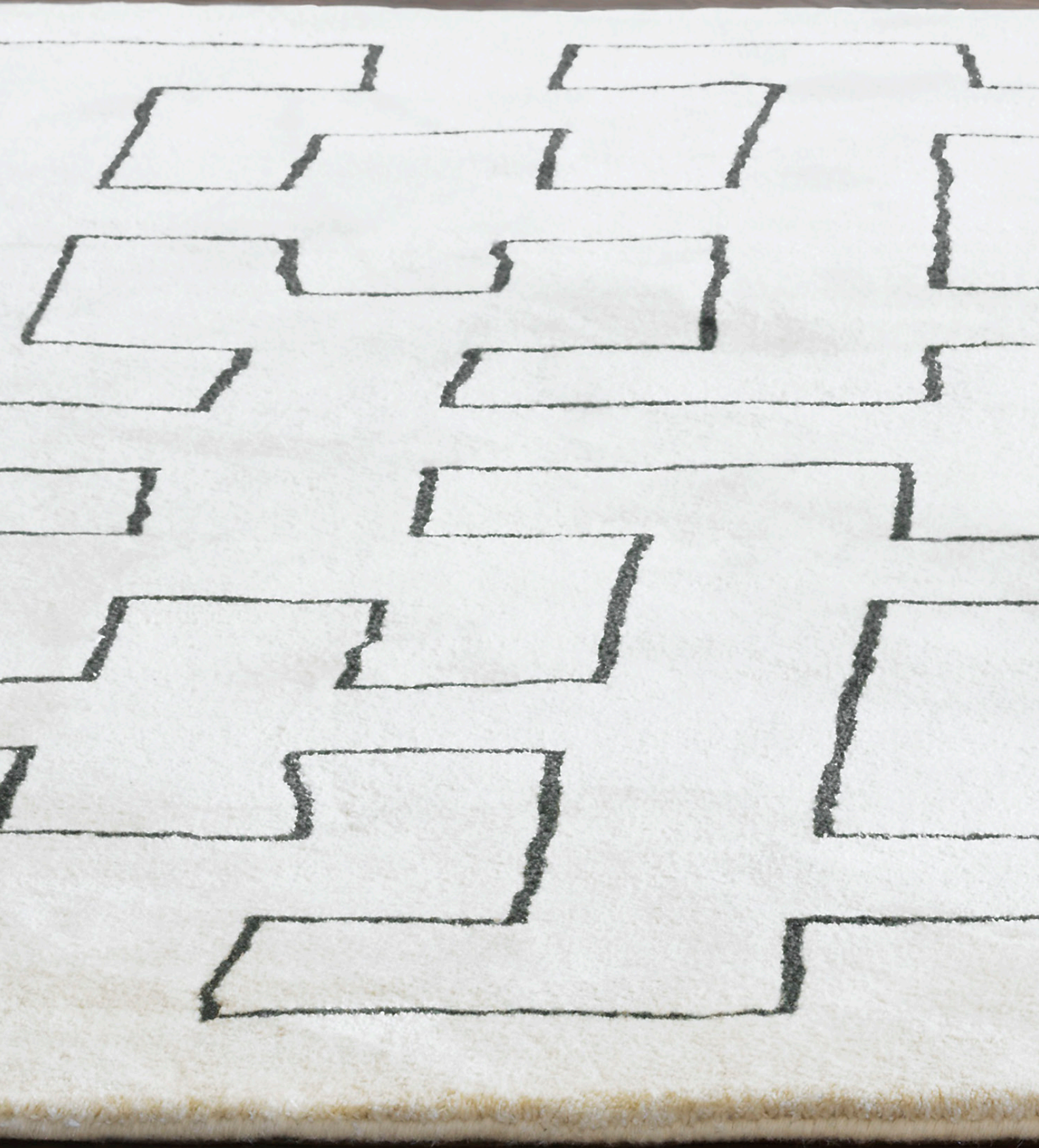
Our hand woven carpets are made manually by skilled craftsmen on traditional flat looms in small villages along the Ganges River in India.

Here, Dhurries are made in the traditional nomadic way, in two different qualities: **SUPER DHURRIE**, a thick carpet made entirely of wool, and the slightly thinner **DHURRIE**. Our **KELIM** carpets are woven using techniques with origins in Turkish Anatolia. These carpets are woven tightly, using silky wool, which makes them particularly soft.

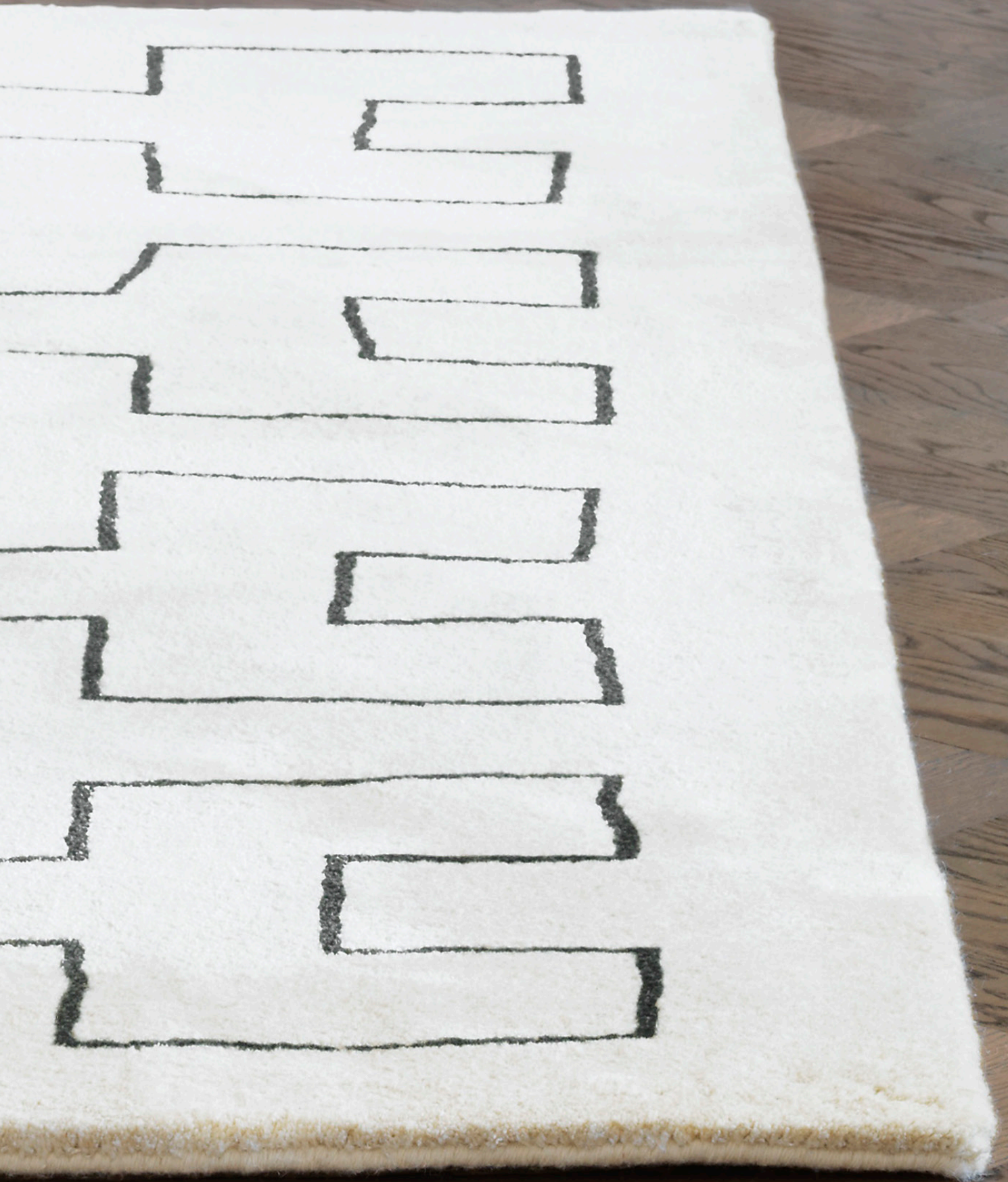
HAND WOVEN AND KNOTTED PILE

This technique is extra time consuming and requires exceptionally skilled craftsmen. The base is a hand woven Dhurrie in 100% New Zealand wool where a pattern or pile, in wool or tencel, is stitched or knotted onto the base by hand.





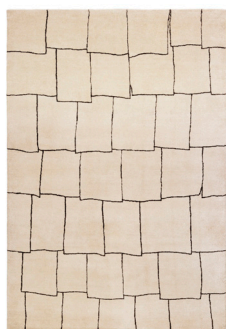
Maze
Hand knotted Platinum Rug



HAND KNOTTED



HAND KNOTTED PLATINUM RUGS



Rooftop
By Thomas Sandell



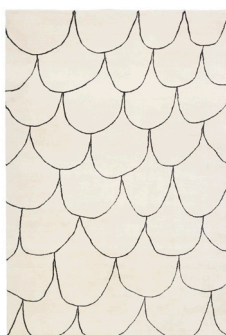
Pebbles
By Thomas Sandell



Fleur
Base in White 01



Tibetan



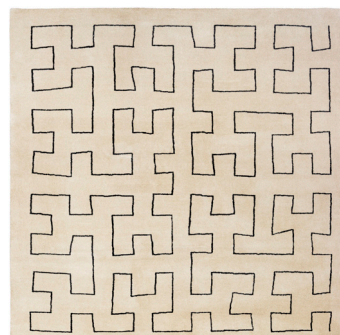
Fish
By Thomas Sandell



Flag
By Thomas Sandell



Lapp
By Thomas Sandell



Maze
By Tom Dixon

PLATINUM

Platinum is our top of the line carpets.

Hand knotted in highest possible quality.

75% New Zealand wool, 25% silk.

Platinum comes in two different qualities:

Indo Nepal with an extra fine, tight pile.

Tibetan knotted with a bigger knot that gives a looser, more heavy pile.

Standard sizes:

90x150 cm

160x240 cm

200x300 cm

200x200 cm

Customers size:

Since our carpets are made to order we are flexible with sizes.

Calculate the square meter (m²) as follows:

Rectangular: width x length = m²

Round: radius x radius x 3,14 = m²

Shown carpets are in 160x240cm or 200x200cm.

Pattern will be scaled to size or repeated .



FLEUR - HAND KNOTTED PLATINUM RUG

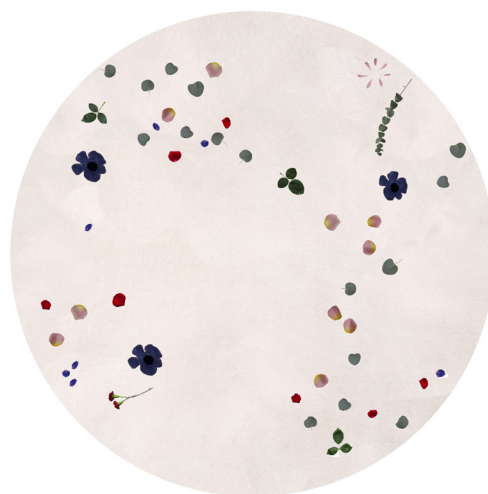
By Broberg & Ridderstråle



Fleur
Base in White 01



Fleur
Base in Beige 24



Fleur Round
Base in White 01

FLEUR

This rug was designed to be a modern take on the classic flower patterns. It actually is a photography of a bunch of flowers thrown on the floor from a high ladder then photographed.

This rug is handknotted in wool, the flowers are in real silk or in a silk mix, some of the flowers are raised from the carpets to enhance the feeling of real flower petals.

We have some standard sizes for this carpet, rectangular or round.

Standard Sizes:

90x150 cm

160x240 cm

200x300 cm

ø 180 cm

Special sizes can be made but then new drawings will be sent upon order to be approved.



GEMS-HAND KNOTTED TIBETAN THIN RUGS



Gems Relieffe
By Damian Williamson



Gems Multi
By Damian Williamson



Gems Outlined
By Damian Williamson

TIBETAN THIN

Tight but a slightly thinner hand knotted carpet with a shorter pile. The same knot as Tibetan but with a lower pile and less yarn is used. It's made from either 100% New Zealand wool with a cut out pattern or with a pattern in a tencel-wool blend. The blend gives the carpet a beautiful lustre and shine, due to the mix of 75% tencel and 25% wool.

Standard sizes:

90x150 cm

160x240 cm

200x300 cm

Customers size:

Since our carpets are made to order we are flexible with sizes.

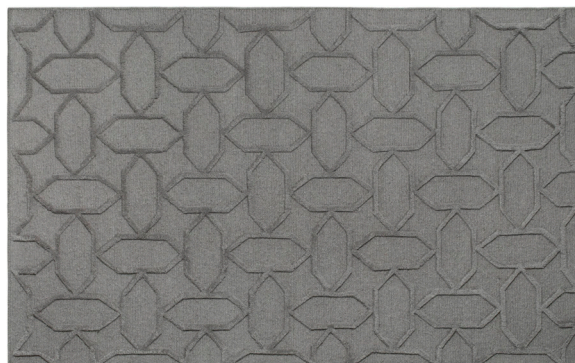
Calculate the square meter (m²) like this:

Rectangular: width x length = m²

Don't forget to take into consideration pattern repeat approximately 27cm x 27cm



HAND KNOTTED SUMAK



Gems
By Damian Williamson

SUMAK

A finely hand knotted carpet with a braided look and a raised pile pattern.

Suggested colours: Thunder 73, Cloud 76, Silver 71, Light Beige 23, Sky Blue 27.

Standard colours also available.

Standard sizes:

90x150 cm

160x240 cm

200x300 cm

Customers size:

Since our carpets are made to order we are flexible with sizes.

Calculate the square meter (m²) like this:

Rectangular: width x length = m²

Don't forget to take into consideration

pattern repeat approximately 27cm x 27cm

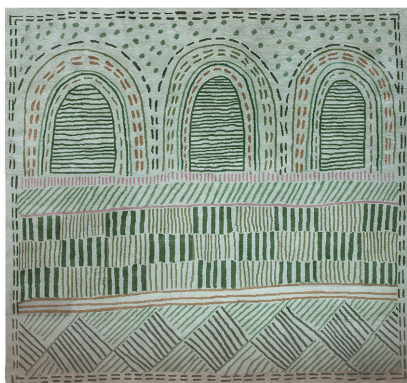


BIBLIOTEKET RUG

Hand knotted in wool and tencel by Emma Olbers



Biblioteket Large



Biblioteket Medium



Biblioteket Small

BIBLIOTEKET

This carpet is designed for the public library in Stockholms newly renovated and reopened National museum by Emma Olbers for ASPLUND carpets.

It is made in a finely hand knotted tibetan thin with 50% wool and a 50% tencel mix.

Comes in 3 sizes:

Large: 255x285 cm

Medium: 255x233 cm

Small: 255x205 cm

Custom size on request.



HAND TUFTED RUGS

100% New Zealand wool



RUGS

100% New Zealand wool. Hand tufted in India.

Made to order.

General standard sizes:

90x150 cm

160x240 cm

200x300 cm

Customers size:

Since our carpets are made to order we are flexible with sizes.

Calculate the square meter (m²) like this:

Rectangular: width x length = m²

Round: radius x radius x 3,14 = m²

Don't forget to take into consideration pattern repeat.

Shown carpets are in 160x240cm .

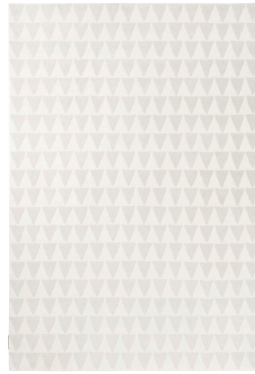
-Pattern will be scaled or repeated according to size.

HAND TUFTED RUGS

100% New Zealand wool



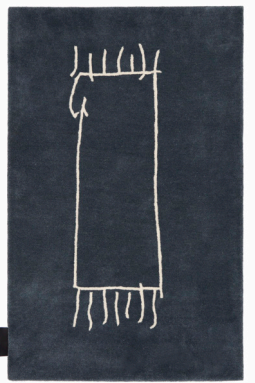
Bow
By Studio ASPLUND



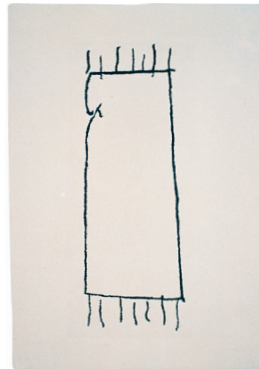
Mini Flag Tufted
By Thomas Sandell



JL
By Jonas Lindwall



Carpet on Carpet
By Jonas Bohlin



Carpet on Carpet
By Jonas Bohlin



Dot
By Pia Wallén



Fish
By Thomas Sandell



Tokyo Taxi
By Claesson Koivisto Rune



Air
By Thomas Sandell



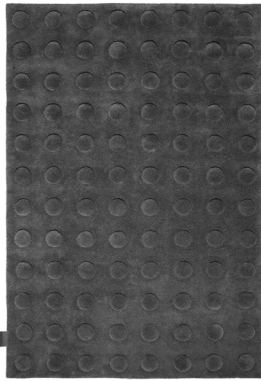
Eucalyptus
By Broberg & Ridderstråle



Bluebell
By Broberg & Ridderstråle



Rose
By Broberg & Ridderstråle



Convex
By Pia Wallén



Beach
By Kristina Håård



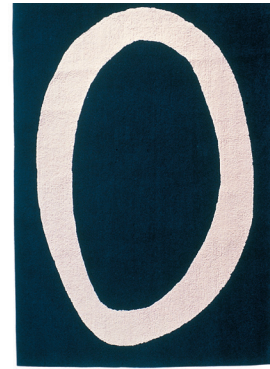
Mr Dottie
By Thomas Sandell



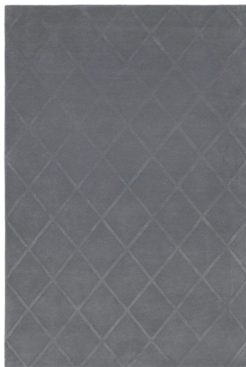
Wibes
By Staffan Holm



Twice
By Jessica Signell Knutsson



Krickan
By Kristina Råström



Classic Minimum
By Studio ASPLUND



Miss Dottie

Hand tufted rug in New Zealand wool with "woolsilk" pattern.

HAND TUFTED ROUND & SQUARE RUGS

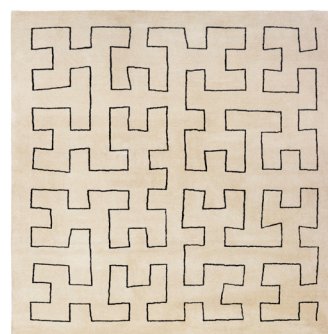
100% New Zealand wool



Lotus
By Broberg & Ridderstråle



Eucalyptus
By Broberg & Ridderstråle



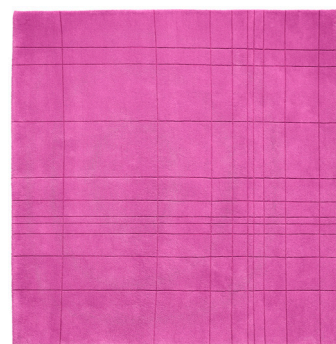
Maze-tufted
By Tom Dixon



Trace
By Ola Rune



Miss Dottie
By Thomas Sandell



Kilt
By Claeson Koivisto Rune

RUGS

100% New Zealand wool. Hand tufted in India.

Made to order.

Size examples:

200x200 cm

Ø 180 cm

Ø 220 cm

Customers size:

Since our carpets are made to order we are flexible with sizes.

Calculate the square meter (m²) like this:

Rectangular: width x length = m²

Round: radius x radius x 3,14 = m²

Shown Carpets are in Ø 180 cm or 200x200cm.

Pattern will be scaled or repeated to size.



Crux
By Pia Wallén

Standard sizes:

125x125 cm

200x200 cm



Plain Woolsilk

WOOLSILK RUGS

Hand tufted in 50% wool and 50% tencel



Ile

By Piero Lissoni

Sizes: longest sides measured .

Shape1: (L2) 2632x1613 (L3)3690x2264

Shape2: (L6)2200x860cm (L7)3142x1189cm

Shape3: (L8)1495x1290cm (L12)2340x2005cm(L13)3930x3372cm

Shape 4:(L10)3386x1363cm

Our woolsilk quality consists of 50% high quality wool and 50% natural fiber from fast growing forests, Tencel . The Tencel is also 95 % biodegradable.

The surface of this quality mix gives both a durable rug but also a vividness and extra lusture. Please note that the pile on all our woolsilk carpets are lightly rough cut to enhance this feeling.

The Ile rugs have standard sizes (can be enlarged procentually)

The Plain monochrome rugs
can be ordered in customers size

In the following pages the woolsilk with set patterns, material mixes and colours will be presented.

WOOLSILK PLAIN

50% wool and 50% tencel.

Hand tufted in India. Made to order.

Standard size:

160x240 cm

200x300 cm

Ø 180 cm

Customers size:

Since our carpets are made to order we
are flexible with sizes.

Calculate the square meter (m²) like this:

Rectangular: width x length = m²

Round: radius x radius x 3,14 = m²

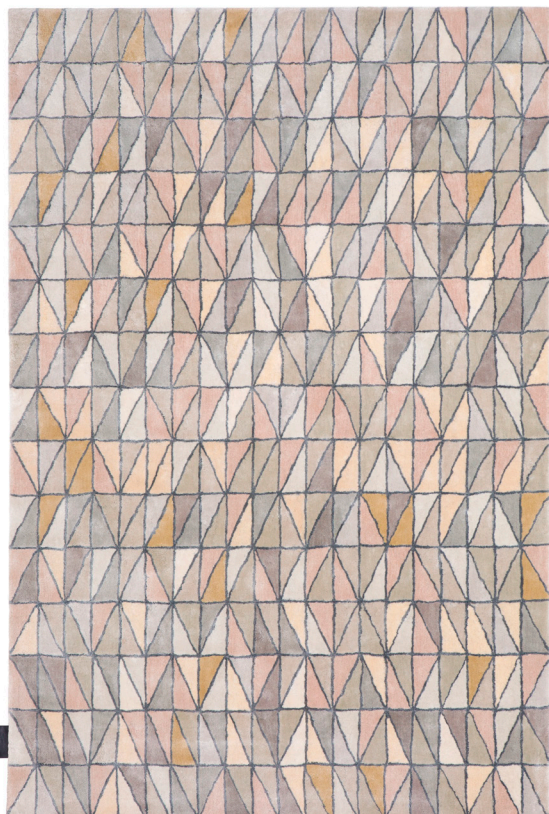


Plain Woolsilk

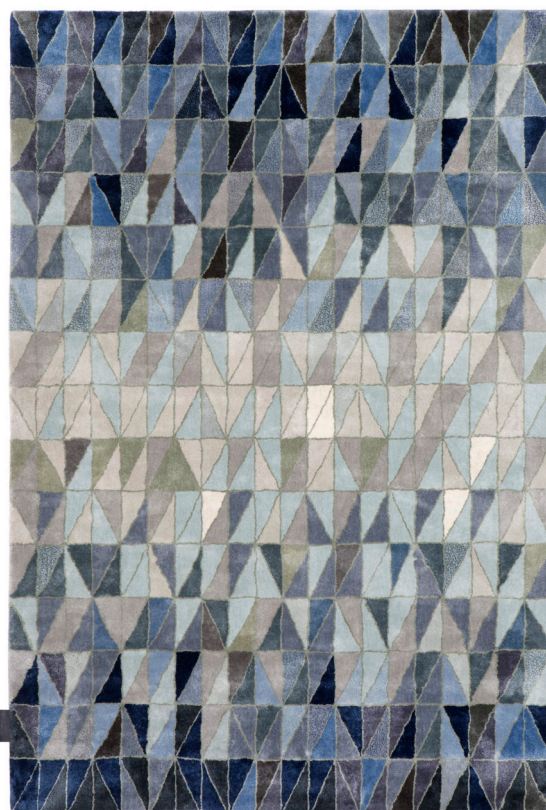


Wedge Blue Shades
By Marie-Louise Hellgren

HAND TUFTED TENCEL[®] CARPET



Wedge Beiges
By Marie-Louise Hellgren



Wedge Blues
By Marie-Louise Hellgren

HAND TUFTED TENCEL[®]

TENCEL[®] branded lyocell fiber. Fiber production itself is extremely ecofriendly, due to the closed loop system. Textiles of TENCEL[®] fibers are more absorbent than cotton, softer than silk and cooler than linen and with an amazing lustre and shine.

Standard fixed colours: Beiges or Blues.

Standard size:

160x240 cm

Customers size:

For the Beige carpet, pattern can be enlarged in a repeat of approximately 16 and 8 cm .

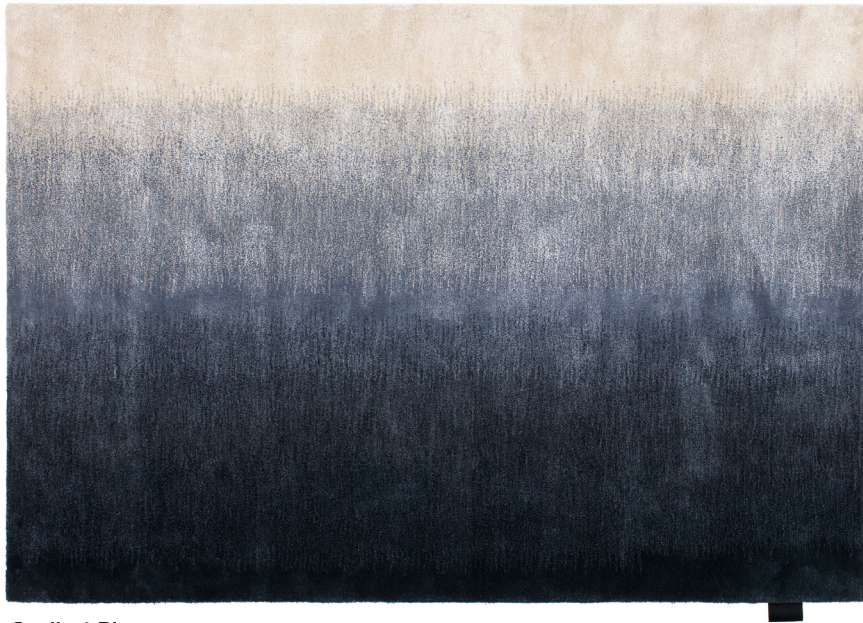
For the Blue carpet that has a fixed pattern;The width can be enlarged in a 8 cm repeat but for a longer than 240 cm, a new design has to be made by our studio.



GRADIENT
by Mattias Stenberg

GRADIENT SERIES

Hand tufted in a special wool and tencel blend by Mattias Stenberg



Gradient Blues



Gradient Browns



Gradient Greens

GRADIENT

Wool and tencel blend. Hand tufted in India.

Made to order.

Standard size:

160x240 cm

Customer size:

Since our carpets are made to order we are flexible with sizes.

Calculate the square meter (m²) like this:

Rectangular: width x length = m²

Round: radius x radius x 3,14 = m²

Don't forget to take into consideration pattern repeat.



Horizon Fields



HORIZON

Hand tufted rugs for walls or floors in a special wool and tencel blend by Mattias Stenberg



Horizon Fields



Horizon Ice



Horizon Frost



Horizon Lake



Horizon Midnight

HORIZON

Wool and tencel blend. Mixed compositions of fabric to create a vivid carpet. Hand tufted in India. Made to order.

Standard size:

160x160 cm

160x240 cm

Custom size on request.



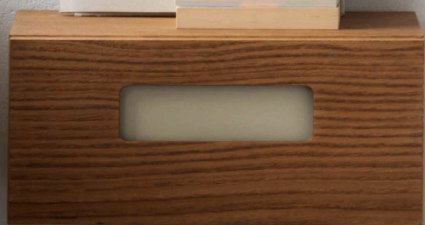
Mini Flag
Hand woven kelim carpet

Tokyo Taxi
Hand woven dhurrie carpet



Star
Hand woven dhurrie carpet

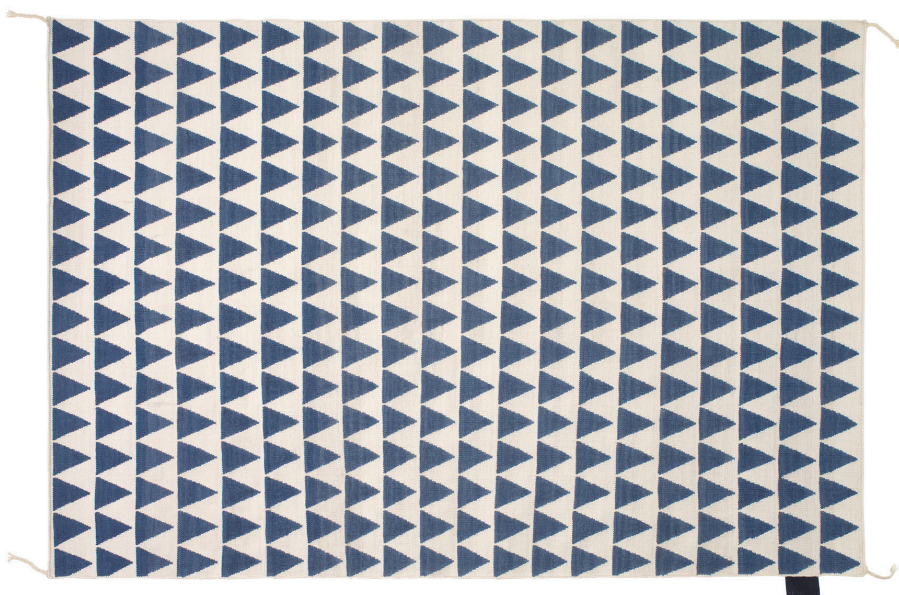
Point
Hand woven dhurrie carpet



MINI FLAG

By Thomas Sandell

Hand woven kelim carpet in 100% wool. Our kelim yarn is selected to be extra soft and lustrous.



Mini Flag Blue / White



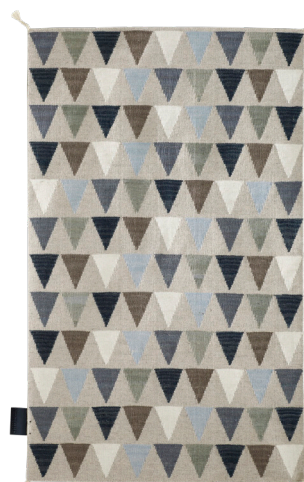
Mini Flag Dark Grey / White



Nordic Bitter Chocolate



Nordic White



Nordic Light Beige



Nordic Grey Anthracite

Sizes:

80x156 cm

80x260 cm

160x240 cm

220x276 cm

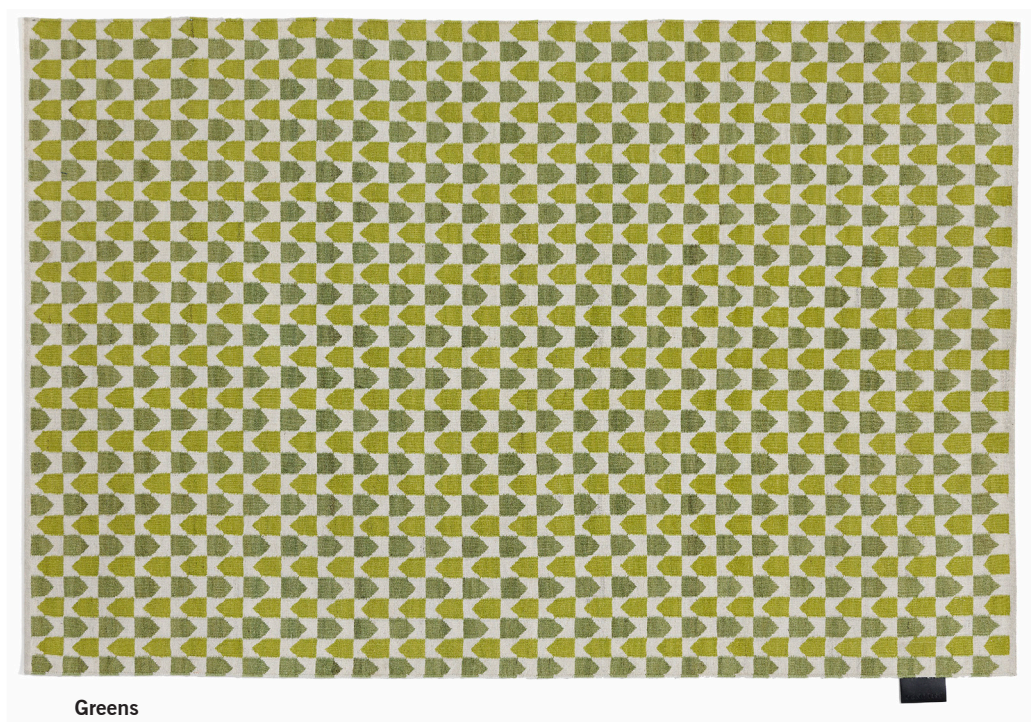


POINT

By Sandra Adrian Asplund

Hand woven dhurrie carpet in 100% wool.

The wool used in this carpet is dyed on a natural wool and gives the weave a melange look.



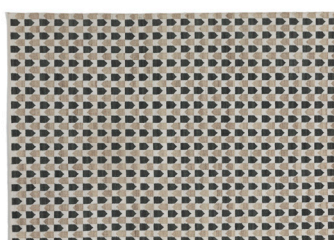
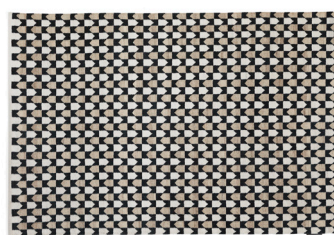
Sizes:

80x150 cm

80x260 cm

160x240 cm

200x300 cm



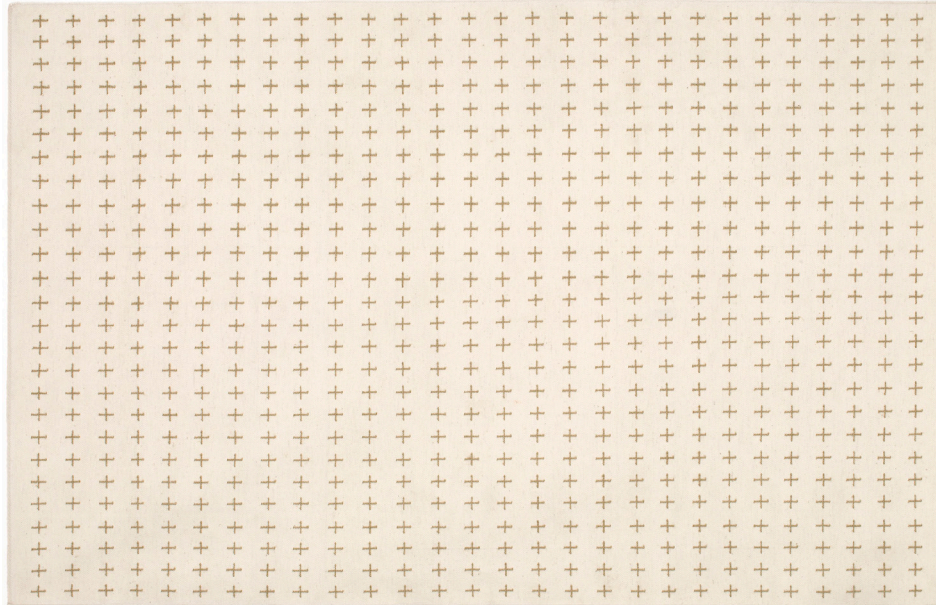


STITCH

By Pia Wallén

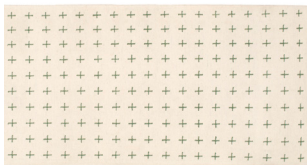
Hand woven carpet in 100% wool with hand stitched pattern in natural yarn.

The wool used in this carpet is dyed on a natural wool and gives the weave a melange look.

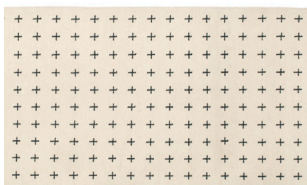


Camel stitches

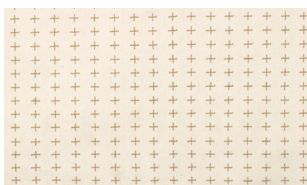
White 01 base:



Olive stitches

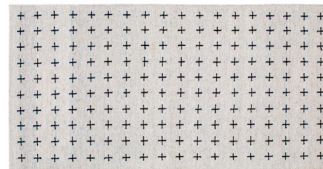


Black Indigo stitches



Camel stitches

Nat Light Grey base:



Black Indigo stitches



Olive stitches



White stitches

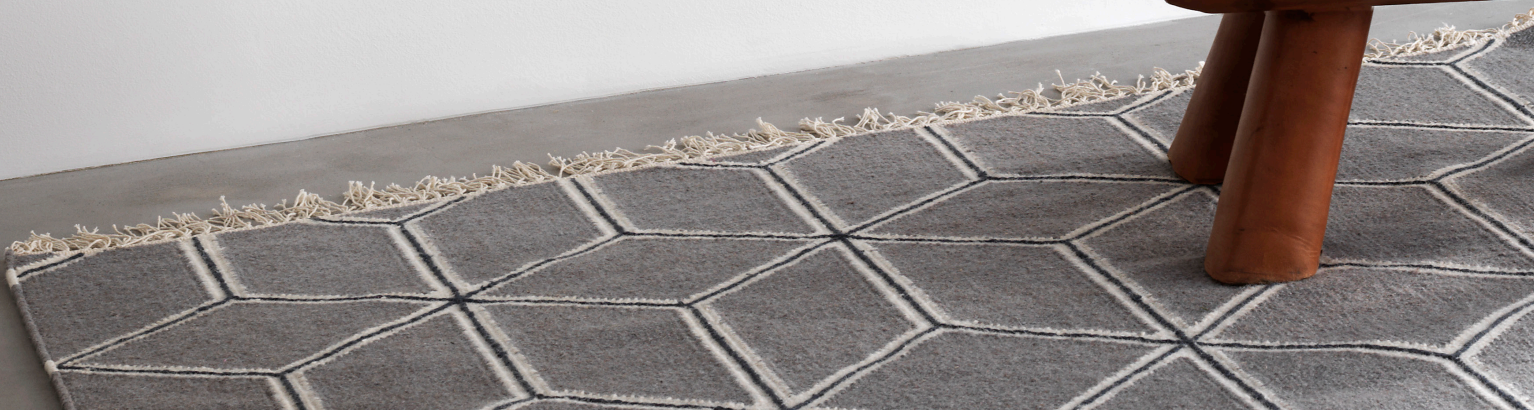
Sizes:

80x150 cm

80x260 cm

160x240 cm

220x330 cm

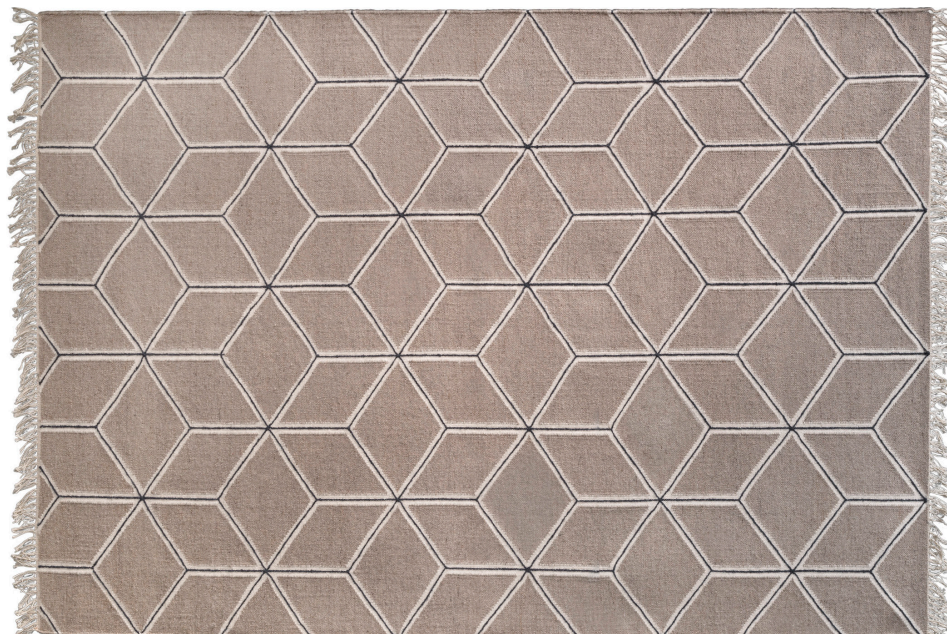


STAR

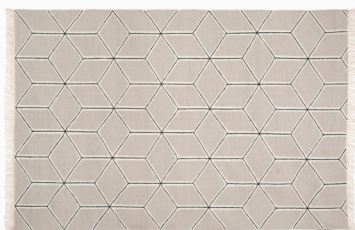
By Emma Olbers

Hand woven carpet in 100% wool with hand stitched pattern and a cotton fringe.

The wool used in this carpet is dyed on a natural wool and gives the fabric a melange look.



Nat. Rye



Nat. Light Grey

Sizes:

80x150 cm

80x260 cm

160x240 cm

220x300 cm



Nat. Medium Grey



RAND 25

By Claeson Koivisto Rune

Hand woven superdhurrie carpet in 100% wool. A thicker woven carpet with folded edges.

The wool used in this carpet is dyed on a natural wool and gives the fabric a melange look.



Nat. Medium Grey. Stripes in White



Nutbrown. Stripes in White

Sizes:

80x150 cm

80x260 cm

160x240 cm

220x330 cm



Nat. Rye. Stripes in Dark Blue



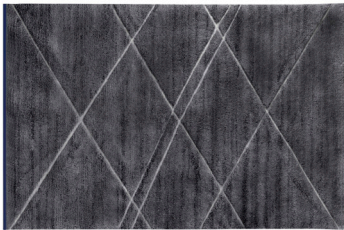
CARPET C

By Anya Sebton & Eva Lilja Löwenhielm

Hand woven carpet in 100% wool with a hand knotted wool pile with contrasting edges.
The wool used in this carpet is dyed on a natural wool and gives the weave a melange look.



Nat. Rye



Nat. Dark Grey

Sizes:

80x150 cm

160x240 cm

220x330 cm



Nat. Light Grey





Fleurette Bluebell

Hand tufted rug in 100% New Zealand wool

CARPET COLOUR GUIDE

Hand tufted, Hand knotted, Hand woven.

01 White
02 Black
03 Dark Grey
04 Grey Anthracite
05 Light Grey
06 Dark Blue
07 Blue
08 Lilac
09 Green
10 Olive
11 Yellow
12 Orange
13 Red
14 Rust
15 Potato
16 Camel
17 Brown
18 Elephant Grey
19 Bright Orange
20 Pearl Blue
21 Mint Green
22 Eggnog
23 Light Beige
24 Beige
25 Light Blue
26 Lavender
27 Sky Blue
28 Violet
29 Deep Purple
30 Chocolate
31 Petroleum Green
32 Pine
33 Lime
34 Apple
35 Light Green
36 Wine
37 Coral
38 Terracotta
39 Turquoise
40 Pink
41 Khaki
42 Moss
43 Indigo
44 Bitter Chocolate
45 Mole
46 Pea
47 Acid Green
48 Light Fuchsia
49 Dark Fuchsia
50 Azure
51 Raspberry
52 Citrus Yellow

53 Mustard
54 Baby Pink
55 Black Indigo
70 Medium grey
71 Silver
72 Tin
73 Thunder
74 Plum
75 Jade
76 Cloud
77 Chartreuse

Woolsilk

01 White
02 Black
04 Grey Anthracite
05 Light Grey
14 Rust
15 Potato
17 Brown
24 Beige
29 Deep Purple
33 Lime
34 Apple
37 Coral
41 Khaki
42 Moss
43 Indigo
45 Mole
49 Dark Fuchsia
53 Mustard
70 Medium grey
71 Silver
72 Tin
73 Thunder
74 Plum
75 Jade
76 Cloud
77 Chartreuse

Naturals

60 Natural Light grey
61 Natural White
63 Natural Dark grey
64 Natural Rye
65 Natural Light green
66 Natural Medium Grey
67 Natural Brown

The colours may vary slightly as the wool is dyed by hand.

Platinum carpets are made up of 75% wool and 25% silk.

The colour is therefore slightly more mottled.

See separate washing instructions.

COLOURS

Standard, seen on tufted samples in 100% New Zealand wool.

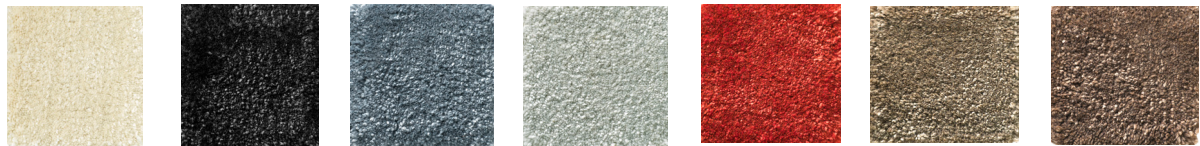




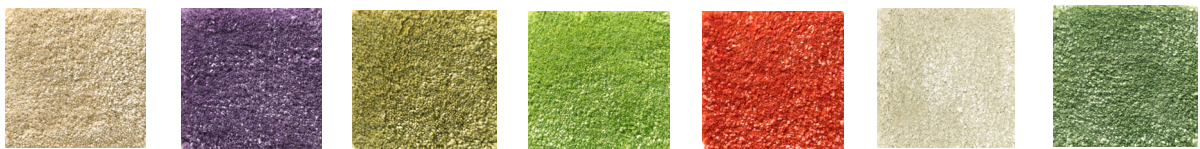
71 72 73 74 75 76 77

WOOLSILK COLOURS

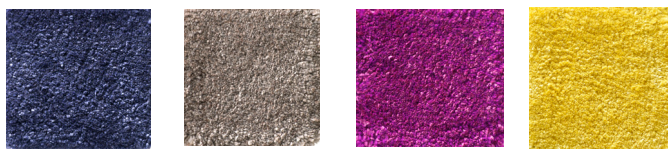
50% New Zealand wool, 50% viscose.



01 02 04 05 14 15 17



24 29 33 34 37 41 42



43 45 49 53

"NATURALS" COLOURS

100% New Zealand wool dyed on a natural yarn. For woven qualities and selected other designs.



60 61 63 64 65 66 67



All yarns is dyed by hand



CUSTOM MADE

If you are on the lookout for something truly unique, our carpets can be custom made to suit your individual preference. We are happy to adjust the shape, size, pattern and colours of our designs to complement home, office or public space.

We offer 77 standard colours knotted/tufted/woven carpets after your request.



ASPLUND



